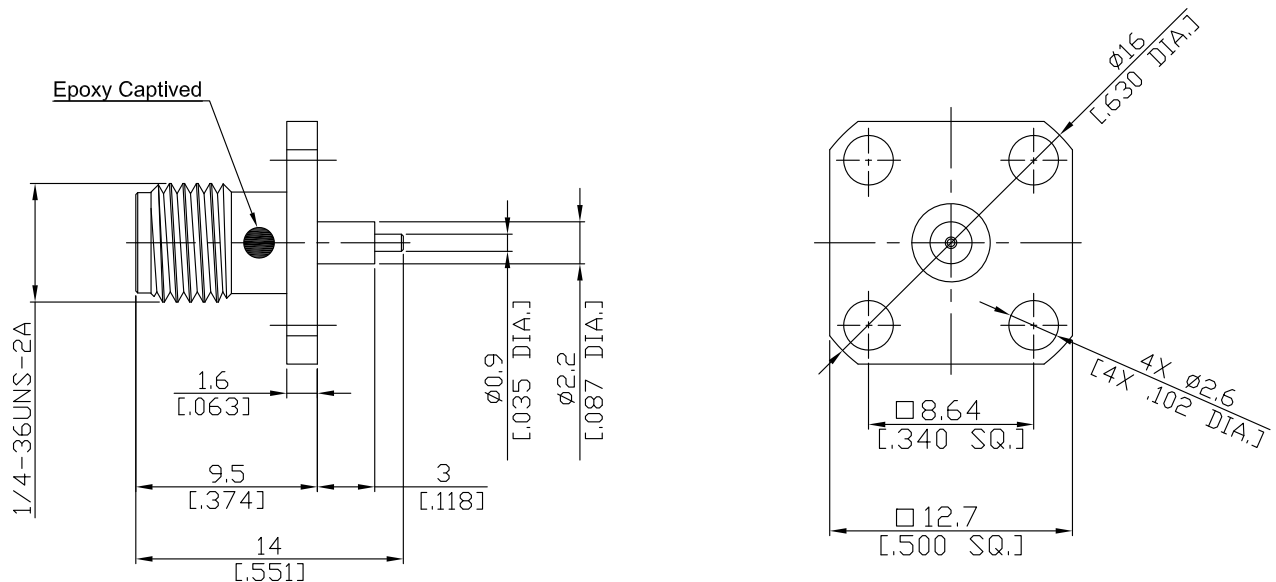


SMA jack (female) Connector Solder Attachment 4 Hole Flange Mount
Stub Terminal, 8.64mm (.340 inch) Hole Spacing DC-18GHz VSWR1.30

SMA2GFA50-1400B-EC / 9X



All dimensions are in mm [inch]

Tolerances according to DIN ISO 2768-mH

Interface

According to

IEC 61169-15; MIL-STD-348B/310

Electrical Data

| | |
|--|--------------------------------------|
| Impedance | 50 Ω |
| Frequency | DC to 18 GHz |
| VSWR (Return Loss) | ≤ 1.30 (≥ 17.7 dB) |
| Insertion Loss | $\leq 0.05 \times \sqrt{F}$ (GHz) dB |
| Insulation Resistance | ≥ 5 G Ω |
| Center Contact Resistance | ≤ 3 m Ω |
| Outer Contact Resistance | ≤ 2 m Ω |
| Test Voltage | 1000 V rms |
| Working Voltage (at sea level) | 480 V rms |
| Power Handling (at 20 °C, sea level, VSWR 1.0) | ≤ 200 W @ 2 GHz |

Material And Plating

| Piece Parts | Material | Plating |
|----------------|------------------|--|
| Centre contact | Beryllium Copper | Gold plating, 3 μ inch (Non-magnetic nickel-phosphorus underplating, 80 μ inch) |
| Body | Stainless Steel | Passivated |
| Insulator | PTFE | |

SMA jack (female) Connector Solder Attachment 4 Hole Flange Mount
Stub Terminal, 8.64mm (.340 inch) Hole Spacing DC-18GHz VSWR1.30

SMA2GFA50-1400B-EC / 9X

Mechanical Data

| | |
|-----------------------------------|-------------------|
| Coupling mechanisms | Screw-lock |
| Mating Cycles | ≥ 500 |
| Centre Contact | Soldered |
| Terminal Type | Stub |
| Captivated Type | Epoxy Captivation |
| Center Contact Captivation: axial | ≥ 27 N |
| radial | ≥ 3 Ncm |
| Coupling Test Torque | max. 1.7 Nm |
| Recommended Torque | 0.8 Nm to 1.1 Nm |

Environmental Data

| | |
|---------------------|---------------------------------|
| Temperature Range | -65°C to +165°C |
| Thermal shock | MIL-STD-202, Meth. 107, Cond. B |
| Corrosion | MIL-STD-202, Meth. 101, Cond. B |
| Vibration | MIL-STD-202, Meth. 204, Cond.D |
| Shock | MIL-STD-202, Meth. 213, Cond. I |
| Moisture Resistance | MIL-STD-202, Meth. 106 |
| RoHS | compliant |

Packing

Single or 100